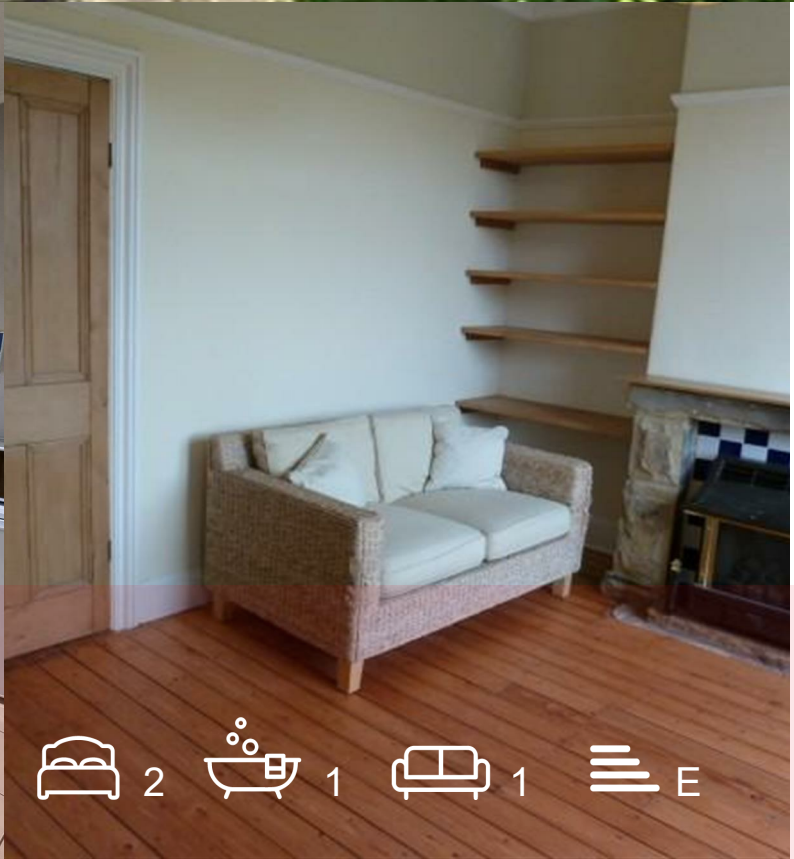




24 Hough Side Road

, Pudsey, LS28 9BR

**£875 Per Calendar Month**





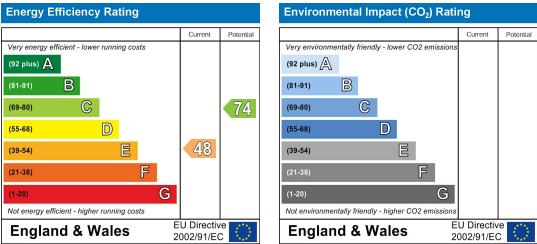
Floor Plan



Area Map



Energy Efficiency Graph



Viewing

Please contact our Farsley Office on 0113 204 0322 if you wish to arrange a viewing appointment for this property or require further information.

- TWO BEDROOMS
- MID TERRACE
- ENCLOSED REAR PATIO
- AVAILABLE NOW!



Two Double Bedroom mid terraced property in an ideal location in Pudsey  
With enclosed patio style garden, this property is available unfurnished and is planned over three floors  
Spacious fully fitted dining kitchen and living room with feature fireplace  
To the first floor, Master bedroom (double) and house bathroom featuring white three piece suite and separate shower cubicle  
To the third floor which is reached via a winding staircase is a second double bedroom with built in wardrobe  
Working Professionals Only  
No PETS  
No Smokers  
BOND - £825  
Leeds City Council Band A



These particulars, whilst believed to be accurate are set out as a general outline only for guidance and do not constitute any part of an offer or contract. Intending purchasers should not rely on them as statements of representation of fact, but must satisfy themselves by inspection or otherwise as to their accuracy. No person in this firms employment has the authority to make or give any representation or warranty in respect of the property.